

Flash USB Drive

HwaZu Disk User Manual

Product Image File

Version 1.33

Table of Contents

I Introduction

I System Requirements

I Functions

I. Install

II. Formatting

II-1 When Formatting

II-2 Do Formatting

III. Setting Password

III-1 Basic Password Function

III-2 Setting Your Own Password

III-3 Log In With Password

III-4 Change Your Password

Iv. Making Bootable Disk

V. Remove Disk Safely

I n t r o d u c t i o n

The “Hwazu Disk” is the new device for portable memory storage. Using this new kind of storage, you can carry your data with you anywhere. This user manual explains how to use this “Hwazu Disk” and what kinds of application program provided. We’ll sincerely appreciate for your continuously support.

S y s t e m R e q u i r e m e n t s

This portable storage device needs the following system requirements. If your computer system is different with our recommend, please talk with your nearest device selling representative.

- I Operating System: Window 98, Windows 98 SE, Window 2000, Window ME, Window XP, Window CE, Linux 2.4 or higher, Mac 9.0 or higher
- I Interface: USB

Window 98 does not support USB Mass Storage Driver, so you have to install the driver we provide with our product. Also we provide our manage program. This program will guide you how to use our device. If you installed this utility program on your computer once, this program will be one of tray icons. Whenever you start your computer, this icon will appear.

This program will run only under windows operation system because this was developed with MicroSoft Windows System. But you can read and write your files in Linux and Mac.

Warning: If you used the device, which set into the condition of using password in the Linux or Mac operation system, “Hwazu Disk” will be not worked. Please disable the password function before you using in these operating systems.

Functions

1. Read and Write

You can use “Hwazu Disk” as a personal Hard Disk could carry out. To do read, write, copy, and delete files.

2. Write-Protect Switch

When you moved the write-protect switch to “ON” position, you cannot write any files or data into the device, but you still can read the files and data. You cannot switch the “Write-Protect” slide switch in the condition of plug-in.

3. Unplug

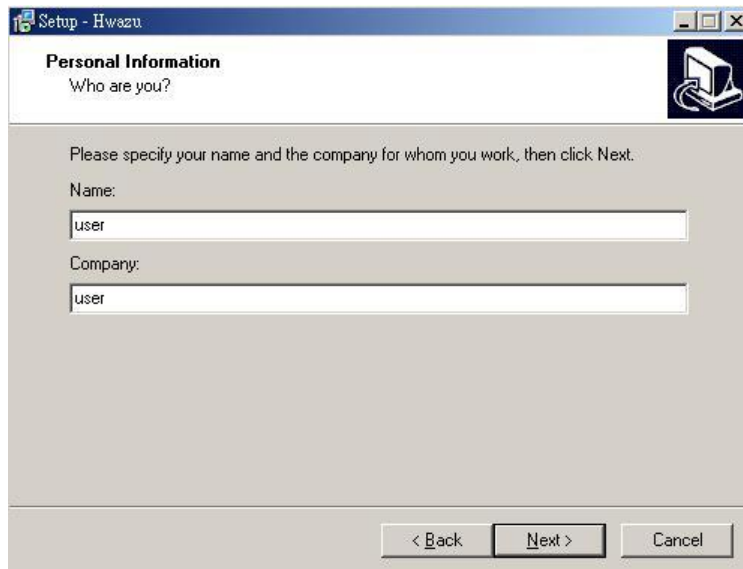
You can remove the device after you finished your job with the device. The correct usage of removing device in different operation system, please refer to “V. Remove Disk Safely” below.

I. Install

Please execute the program, “Hwazuv12.exe”, in your CD ROM to refer to our procedure explained below.



Please input your personal information as follow:

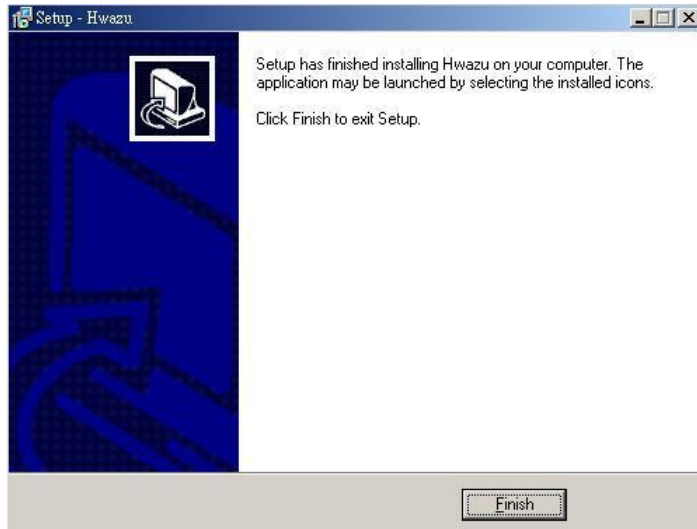


The screenshot shows a Windows-style window titled "Setup - Hwazu". The main heading is "Personal Information" with the sub-heading "Who are you?". Below this, there is a small icon of a computer monitor. The text reads: "Please specify your name and the company for whom you work, then click Next." There are two input fields: "Name:" with the text "user" and "Company:" with the text "user". At the bottom, there are three buttons: "< Back", "Next >", and "Cancel".

Choose one setup language. Here recommend you to find one is the basic language of your system, or that the font showed with the program cannot be readable.



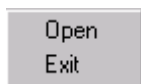
The screenshot shows a Windows-style window titled "Setup - Hwazu". The main heading is "Choose Setup Language" with a small icon of a computer monitor. The text reads: "Select the Language for this installation from the choices below." There are four radio button options: "English" (which is selected), "Traditional Chinese", "Simplified Chinese", and "Korean". At the bottom, there are three buttons: "< Back", "Next >", and "Cancel".



After this setup was done, you can find an icon showed in right bottom side of your monitor. If your system is Windows 98 or Me, the message box, “plug In Device” will be showed on your screen. At that time, you need to plug your device with your system, and then the setup will be completed.



Click right button of your mouse, then you can find icon box as below.



If you click “Open”, your “Hwazu Disk” will next window.



When your “Hwazu Disk” does not plug in your system, this “Hwazu Manager” window will not be showed.

I. Formatting

This formatting function can help you to use this “Hwazu Disk” safely. If your device had some bad blocks in flash memory, this utility program can recover flash memory usage. We have to remind you after doing format; you’ll lose all of previous data you saved in the device. Please back up your important data before doing format.

(Recommendation: Please do disk format through “Hwazu Manager”, you can do the same job with the menu provided by Windows, though. It is related whether it can extend the life cycle and the speed of your device.)

II-1. When Formatting

1) First Time Usage

When you get this “Hwazu Disk”, we recommend you need to run this formatting utility program. This program checks flash memory status and give you its initial memory size. Also this function on the first time usage can help you to use flash memory more safely.

2) Screen Bad Blocks

Once your flash memory was damaged, you need to scan these bad blocks. The damaged device may lose your data. So we recommend you need to run this utility program regularly. This utility program checks your device and deletes bad blocks from flash memory block chains and protect data lose.

3) Full Format

Sometimes some bad blocks still remain even though after formatting. At this case, you need to run this utility program with full formatting option. Compared to quick formatting, this full formatting actually writes and reads some data on every flash memory blocks and screens all of bad blocks. It will take longer time to do full formatting that quick format.

4) Forgotten Password

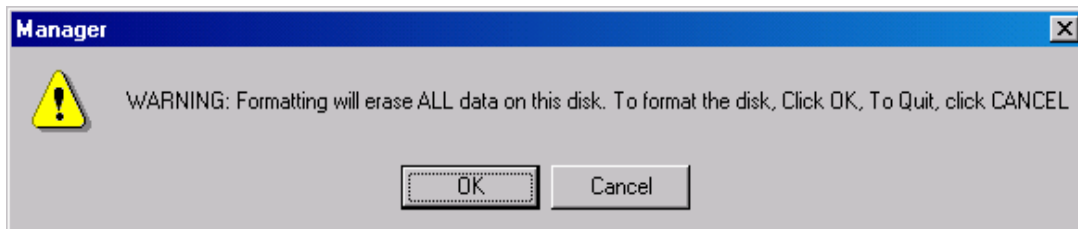
If you forgot your password, it is the only way to format this device. Your data will be lost with this formatting. (Default Password : “0000”)

II-2. Do Formatting

You have to plug your “Hwazu Disk” into USB port and run utility program, “Hwazu Manager”. The below manger program window will be popped up.



After marking “Quick Format”, and click “Formatting” button. If you “OK” button instead of “Formatting” button, you can’t do format your device. Before you finish the formatting, please check if you confirm on the below message window.



This message window shows that you will lose all of your data after formatting. You need to save your important data into other storage device before formatting. If you clicked “OK” button, the formatting begins. You can see the progress of formatting in the below window. Please don’t click any button during this formatting.



Warning: Before doing format, please check if your ‘Write Protect’ switch in the “Off” side.

Setting Password

The Password function can protect your data safely. If you set your password into “Hwazu Disk” once, nobody can get your data without your password.

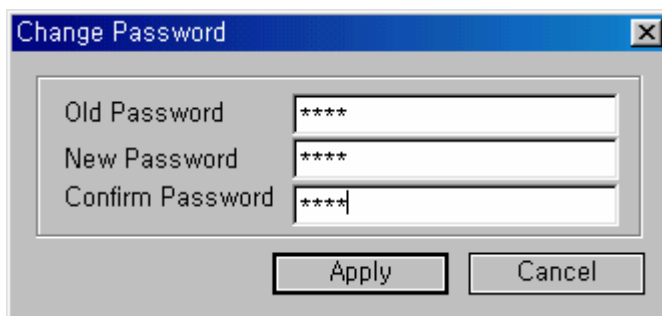
III-1. Basic Password Function

Execute the managing program, “Hwazu Manager”, after clicking “Open” button of bottom menu bar. The below popup window will be appeared. If you click “V” marking on “Using Password”, you can set your password. The default password is “0000”. We strongly recommend you need to change this default password with yours. Without clicking “Change Password “ button, if you just click “OK” button, the default password will be used.



III-2. Setting Your Own Password

After mark “Using Password” box and click “Change Password” button, you can see the “Change Password” popup window like below.



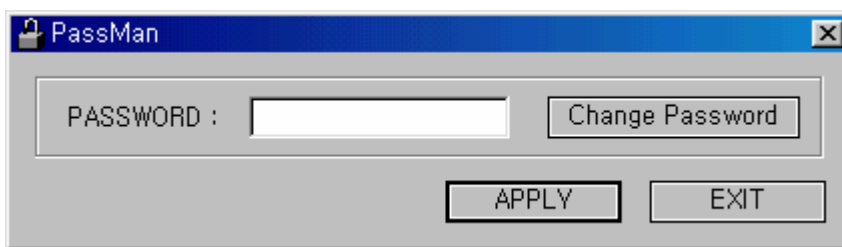
The default password is “0000”, so you need to enter “0000” on “Old Password” field, and enter your own password on “New Password” and “Confirm Password” filed. After click “Apply” button, and this window will disappear. Click “OK” button on “Manager.exe” window. Your password is set now.

Now your “Hwazu Disk” is in the security status. After re-plug in your device, you can see “passman.exe” in the removable disk. From now you

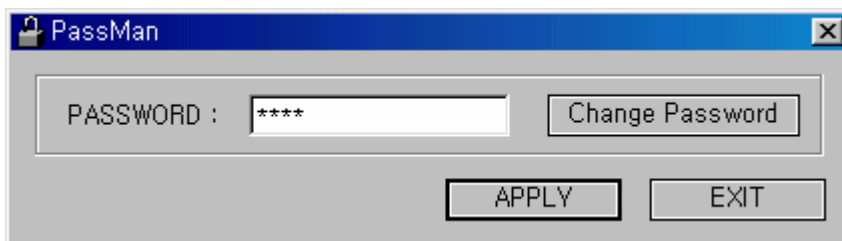
should through it to access your device.

III-3. Log In With Password

Whenever you plug in “Hwazu Disk” with USB port, the password check window, “PassMan” will be popped up automatically like below. (In the system set up “Hwazu Manager”, “passman.exe” will pop up automatically. If you use your device move to other system never set up “Hwazu Manager”, you should click “passman.exe” to use it.)

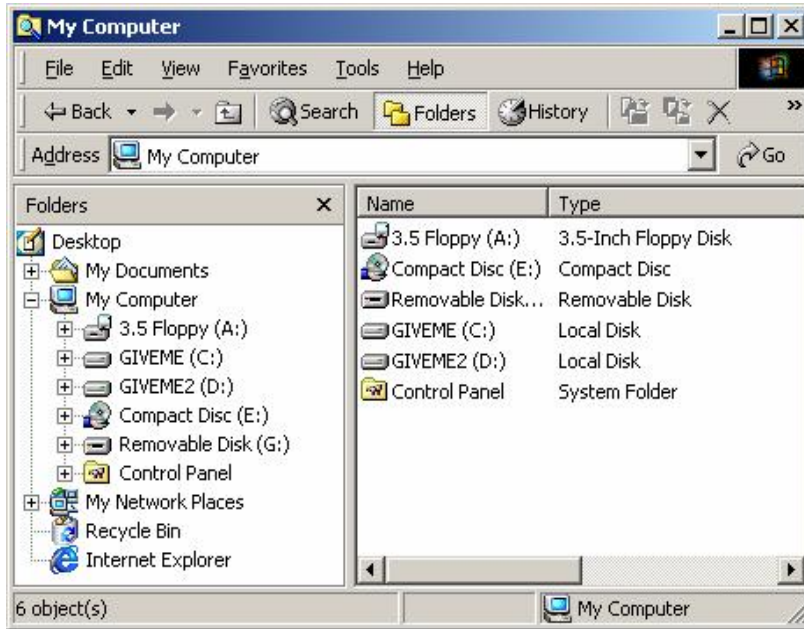


After enter your password and click “APPLY” button in PassMan window, “PassMan” will check your password and will disappear if password is correct.



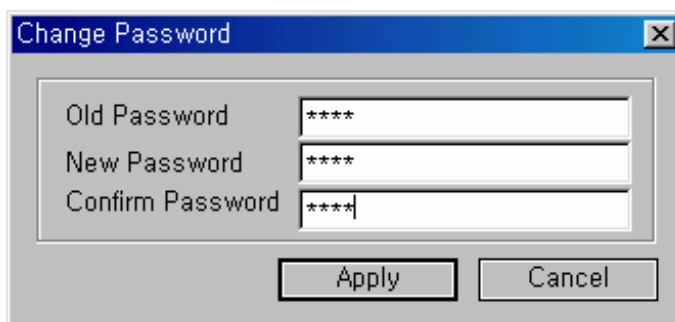
After login with password, you can use this removable disk. We can see “Removable Disk...” in the computer’s file directory. You can write and read files.

(Below window maybe a little bit different in other operation systems)



III-4 Change Your Password

There are two ways of changing your password. You can change your password in manger program, “Hwazu Manager” and password check program “PassMan”. Your can change the password anytime with “Hwazu Manager” icon in menu bar of your computer. This is same with password setting.(See II-2 Setting Your Own Password) Also you can change the password in “PassMan” window. If you click “Change Password” button, the “Change Password” window will appear. You can set your new password in this window.



IV. Making Bootable Disk

This function will make this device as a booting disk. If you don't have any bootable solution, for example no CD and no floppy disk, you can use this device when you boot up your computer. This program runs only under Win 98. This function will be done during formatting this device.



If you mark “Make Bootable Disk” and click “Formatting” button, this utility program save booting files form Win98 operation system for booting up your computer into this device. This bootable disk can be used when you boot your computer in DOS operation system. Each motherboard has its own design of BIOS. “Hwazu Disk” can make your system boot up in the status set 1st boot up condition with ‘USB Zip’ in the Bios booting menu. Also we recommend that it will be better to format again your device after using bootable disk. This re-formatting can make your device safer and longer usage.

V. Remove Disk Safely

When you remove your device from your computer, you have to be careful. If you remove it suddenly during reading or writing some files, it may cause your data losing. Also even your device is waiting mode; you need to remove it with the following instructions.

Windows 98 : Plug-Out Only When LED Turn-Off

Windows ME, 2000 : Use “Unplug or Eject Hardware” Button on Window System

Mac : Throw The Removable Disk Icon Into Recycle Bin

Linux : Remove The Disk After Execution ‘unmount’ Command